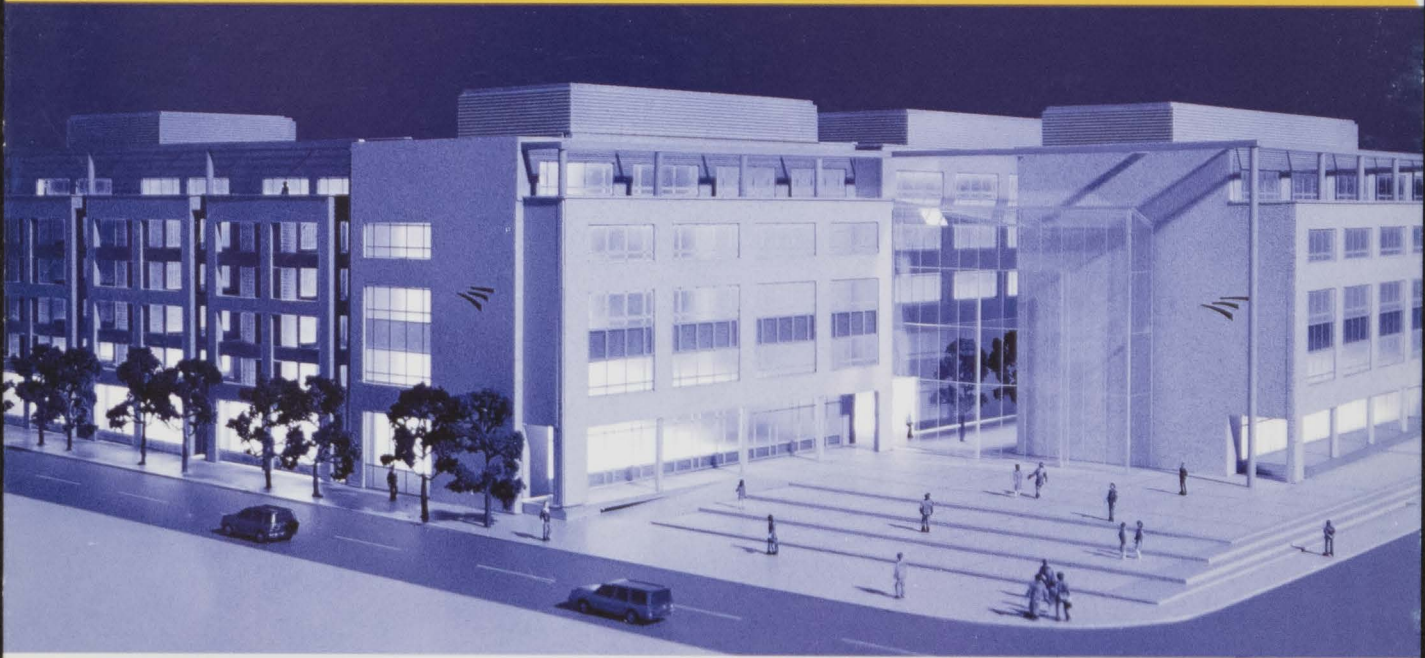




National
College of
Ireland

*The college for a
learning society*

a campus
WITHOUT WALLS





In an exciting new development, National College of Ireland will relocate to its new purpose built state of the art Campus in the heart of Dublin's Financial Services Centre at Mayor Street, in summer 2002. This relocation heralds the next step in harnessing the colleges' mission of access, opportunity and excellence in education nationally.

ACCESS - OPPORTUNITY - EXCELLENCE

CAMPUS FEATURES

ACADEMIC YEAR 2002/2003

In line with our mission of broadening access to education for all, National College of Ireland's new "campus without walls" will comprise three integrated elements:

The College - is a hub for 8,000 students, studying full-time, part-time, at 40 off-campus centres, in community based groups, in business and through distance and online learning facilities.

The Student Residences - offers modern student apartments, allowing students to enjoy easy access to the college. In addition, it affords students the opportunity to interact with the local community and businesses, through job placement and work experience.

The Research Foundation - comprises the Education Resource Centre, the Centre for Learning and Teaching, the Centre for Corporate Responsibility and the Policy Research Centre. The Research Foundation serves to nurture an environment where companies will work together to create incubator units and help to create the businesses of the future.

National College of Ireland's impressive new state of the art campus, which is 21,000 square metres and 5 stories high, provides a range of excellent features and facilities.

- A large 270 seater lecture theatre for college and public activities
- State of the art computer laboratories and large studio classrooms
- Extensive lecture hall space with tiered lecture theatres
- Modern student residences that will accommodate 286 students
- Large modern library with excellent IT facilities. It will also include seminar rooms, a public access information area for students, local community and local business
- Network connection points and wireless connectivity throughout the campus
- Excellent restaurant and student catering facilities
- Student recreation and student meeting room facilities
- Large atrium and internal quadrangle available for social and cultural activities
- A gym
- An Education Resource Centre (with crèche facilities)
- A Wellness Centre

IFSC and Local Amenities

- Munchies
- Harbourmaster Bar
- Laundry and Drycleaning Shop
- O'Briens Sandwich Bar
- Spar
- Excise Bar
- Insomnia Cafe
- Bendini and Shaw
- IFSC Medical Centre
- La Corte
- Milano's Italian Restaurant
- The Tanning Shop
- Espresso Bar
- Cabot & Co Wine Shop
- IFSC Flowers
- Remedi Pharmacy
- Cellular World
- Reed & Co Recruitment
- Biz Post
- Gloria Jeans Cafe
- Clarion Hotel
- Jurys Inn
- ESB SPORTSCO
- Clanna Gael Fontenoy GAA Club
- Markievicz Leisure Centre
- Ringsend Community Centre

COURSES

Full-Time Day Courses

School of Business and Humanities

- Bachelor of Arts in Accounting and Human Resource Management
- Bachelor of Arts in European Business Studies and Languages
- National Certificate in Business Studies (Industrial Relations/Human Resource Management)

School of Informatics

- BSc in Software Systems
- National Certificate in Computing (Applications and Support)

National College of Ireland full-time day courses are offered through the CAO system and are eligible for FREE FEES under the Free Fees Initiative and grants under the Higher Education Grants Scheme

Special Entry Initiatives - Area-Based Partnership Application Scheme

Part-Time Day Courses

- FETAC Foundation Certificate Cultural Studies Elective
- FETAC Foundation Certificate Social Studies Elective
- FETAC Foundation Certificate - Science Elective
- HETAC One Year Certificate in Management & Employee Relations (day release)
- NCI Diploma in First-Line Management (Supervision) (day release)

Evening Courses

- BA in Industrial Relations & Personnel Management
- National Diploma in Personnel Management
- National Diploma in Business Studies (Human Resource Management)
- Certificate in Personnel Practice
- HETAC One Year Certificate in Business Law
- NCI Diploma in Management and Employee Relations
- HETAC One Year Certificate in Management and Employee Relations
- NCI Diploma in First-Line Management (Supervision)
- NCI Certificate in Managing Organisations in the Voluntary and Community Sector

Distance Learning Programme

- National Diploma in Personnel Management

Postgraduate Programme

- Graduate Diploma in Business Studies in Human Resource Management
- Graduate Diploma in Business Studies in Electronic Commerce
- MA in Management and Technology by Research
- MA and PhD by Research

NCI Online Programme

- NCI Certificate in Managing Teams
- NCI Certificate in Electronic Commerce for Managers
- NCI Certificate in Motivation and Leadership

Off-Campus Programme

- 40 Off-Campus centres throughout Ireland

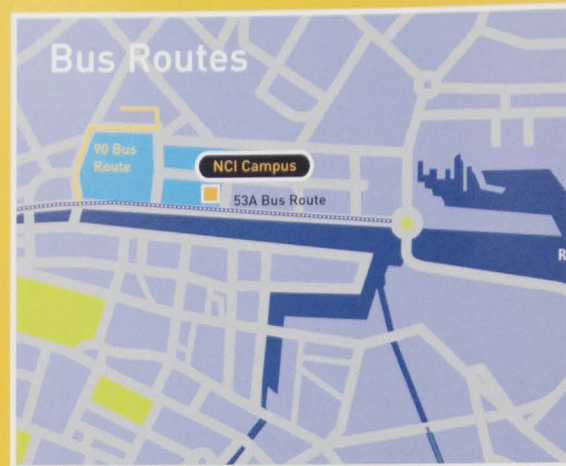
Work Based Education and Training Programmes

Community Based Programmes



THE COLLEGE FOR A LEARNING SOCIETY

LOCATION



GETTING THERE

Walking

Due to its central location, the campus is within 5-10 minutes walk from Dublin's main streets, O'Connell St. and Grafton St. There are proposals for future pedestrian bridges across the Liffey.

Bus

Two bus routes run to the campus in the IFSC (53a and 90), with over 70 bus routes terminating in the vicinity. The IFSC is also located beside the central mainline bus terminal (Busáras) which services all country routes. For a detailed list of all bus routes servicing the city centre, please visit our web site www.ncirl.ie

Rail

The frequent DART (Dublin Area Rapid Transit) service serves three stations in the city centre, Tara St., Pearse St. and Connolly Station, all within a 5 minute walk to the IFSC. The proposed Barrow St. station will also serve the IFSC. There is also a proposal for the development of a rail link from the proposed National Conference Centre to the airport.

LUAS

Line A of LUAS (a suburban light rail link for Dublin) which is under construction, will link Tallaght to Connolly station. The line will be extended into the IFSC.

Cycling

Cycletracks are being included in line with the amenity works on the north and south banks of the river linking in to the existing Dublin cycletrack network.

Road

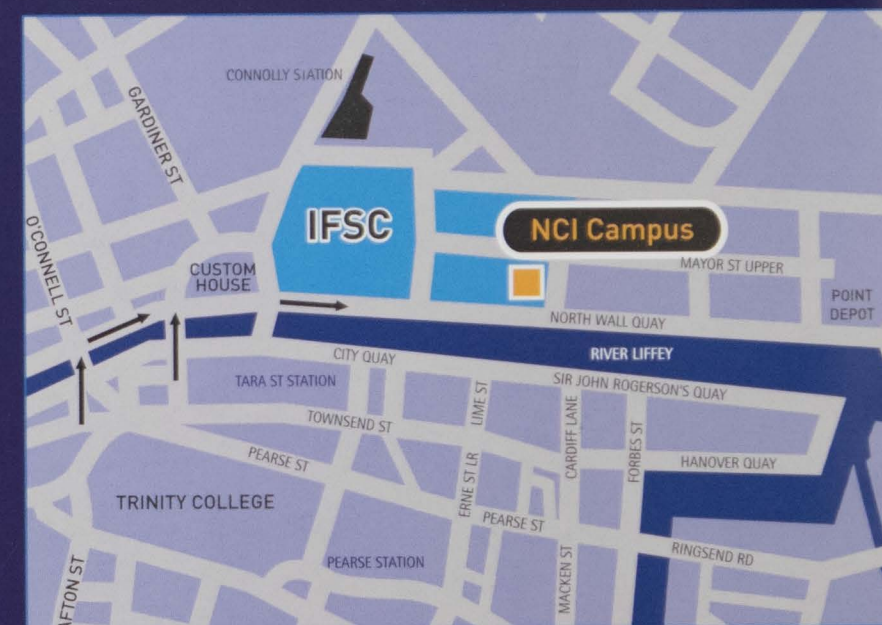
The nearby Macken Street Bridge, connecting Guild Street with Sir John Rogerson's Quay, which will be completed by 2003, will provide an important connection between the North and South Docklands area, for pedestrians, cyclists, public transport and private motor vehicles.

National College of Ireland 40 Off-Campus Centres Throughout Ireland

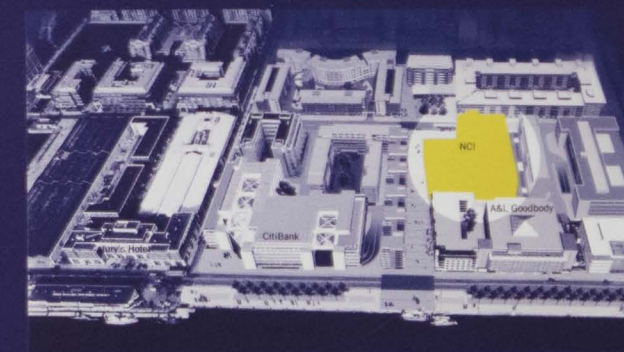
- Off-Campus Centres Within Dublin**
- Ballymun
 - Clonsilla
 - Docklands
 - Donaghmede
 - Dundrum
 - Finglas
 - Leixlip
 - Malahide
 - Palmerstown
 - Tallaght
 - Whitehall



Dublin City Centre



IFSC/Docklands Area



Sandford Road, Ranelagh, Dublin 6
Fax: (01) 497 2200 Email: info@ncirl.ie
From Summer 2002:

P.O. Box 8316, International Financial Services
Centre, Mayor St., Dublin 1

VISIT OUR SITE AT
www.ncirl.ie
PHONE 1850 221 721